

CATALOGO
DE MODULOS

TABLA DE CONTENIDO



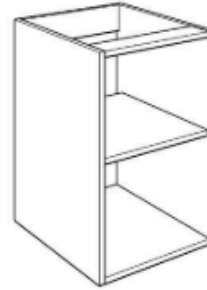
PAGE 3-4

MODULOS ESTANDARES



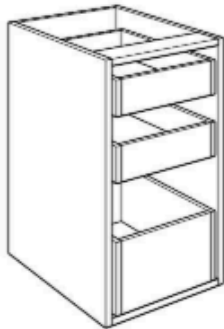
MUEBLE FREGADERO

- BF72-80
- BF72-90
- BF72-100



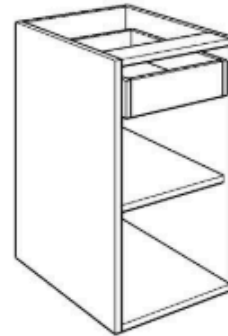
MUEBLE BASE

- B72-30
- B72-45
- B72-60
- B72-80
- B72-90
- B72-100



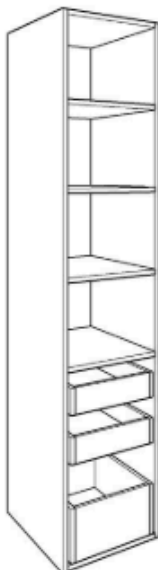
MUEBLE 3 GAVETAS

- B3G72-45
- B3G72-60
- BG372-90



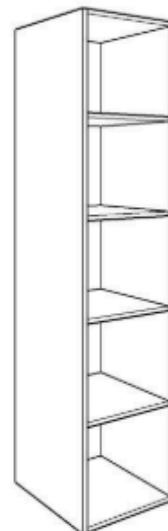
MUEBLE 1 GAVETA

- B1G72-45
- B1G72-60
- B1G72-90



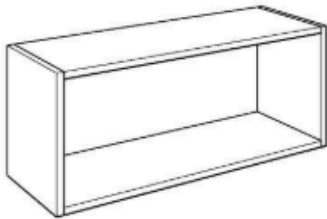
DESPENSA 3 GAVETAS

- D3G204-45
- D3G204-60
- D3G204-90



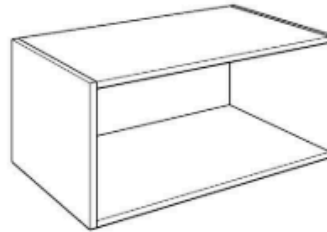
DESPENSA

- D204-45
- D204-60
- D204-90



MUEBLE AEREO TIPO PUENTE

- AP40-62
- AP40-82
- AP40-92



MUEBLE AEREO TIPO PUENTE PROFUNDO

- APP40-62
- APP40-82
- APP40-92



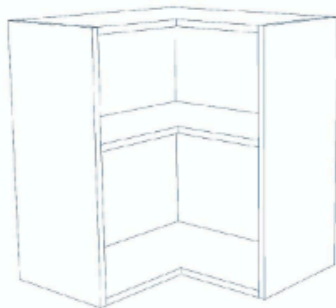
MUEBLE AEREO

- A72-30
- A72-45
- A72-60
- A72-80
- A72-90
- A72-100

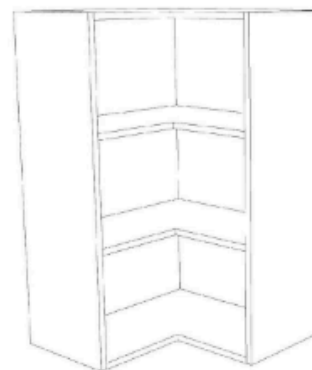


MUEBLE AEREO

- A100-30
- A100-45
- A100-60
- A100-80
- A100-90
- A100-100



AEREO ESQUINERO
AE: 630 X 330 X 720 mm



AEREO ESQUINERO
AE: 630 X 330 X 1000 mm



**CONOCE
MAS!**